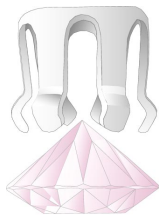


# True-Snap® Settings

- **No secondary setting operation needed**
- **Securely set with just one snap**



**A1943**  
3mm Round

**A1944**  
4mm Round

**A1945**  
5mm Round

**A1946**  
6mm Round



**A1947**  
7mm Round

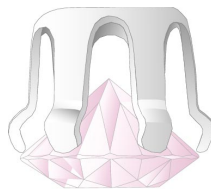
## Settings

**A1948**  
8mm Round



**APAC** has developed a new snap setting utilizing spring tension that's engineered into the setting to align, place and securely hold the stone in just one simple operation.

**APAC** uses welding technology to manufacture **True-Snap®** earring studs, leverbacks and pendants. Welding technology uses a very focused electrical charge which bonds the parts together without subjecting the settings and components to intense heat that causes annealing or softening of the setting's metal alloy. Welding not only produces a stronger bond but also allows **True-Snap®** settings to retain their unique snap characteristic.



**E1993**  
3mm Round

**E1994**  
4mm Round

**E1995**  
5mm Round

## Pendants

**P0133**  
3mm Round

**P0134**  
4mm Round

**P0135**  
5mm Round

**P0136**  
6mm Round

**P0137**  
7mm Round

**P0138**  
8mm Round

**E1996**  
6mm Round

**E1997**  
7mm Round

**E1998**  
8mm Round

## Earring Studs

